

# Native Fauna of Springhill Farm

— Trail Network  
 - - - Study Area Boundary  
 □ Church Easement



American Copper



Meadow Jumping Mouse



Eastern Grass Veneer



Northern Short-tailed Shrew



Spotted Salamander



*Pelochrista kimballi*



Eastern Pine Elfin

Forested Wetland



Newman's Mathildana Moth



Ovenbird

Meadow

Forested Upland



Common Raccoon



White-tailed Deer

Pond

Forested Wetland

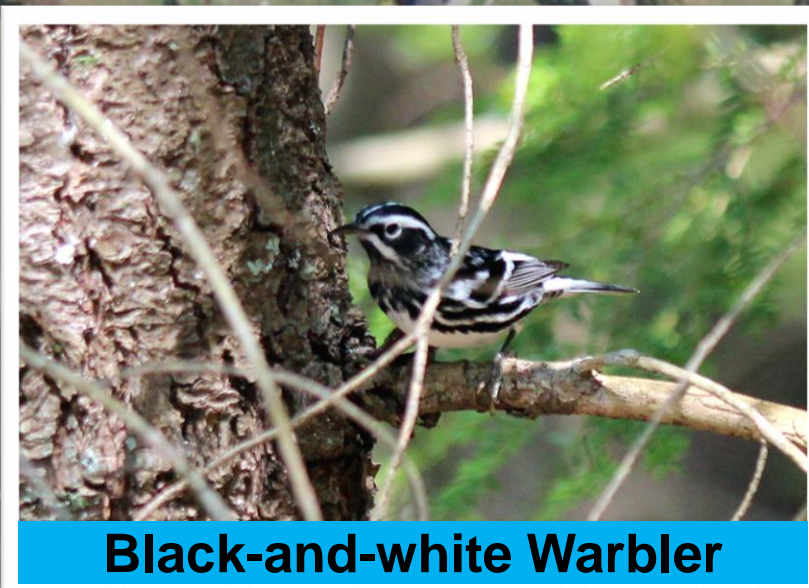
Shrub Wetland

Shrub Wetland

Forested Upland

Meadow

Forested Upland



Black-and-white Warbler



*Oncopsis cinctifrons*



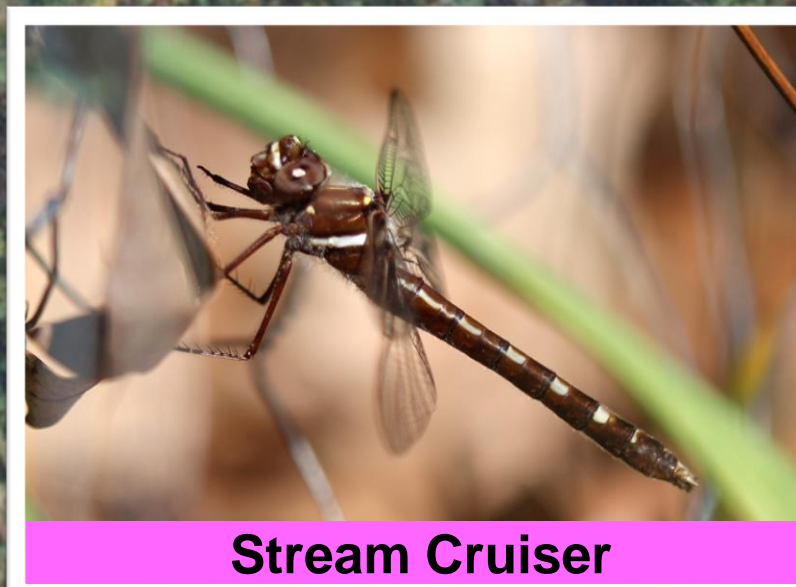
Common Snapping Turtle



Uhler's Sundragon



Wood Frog



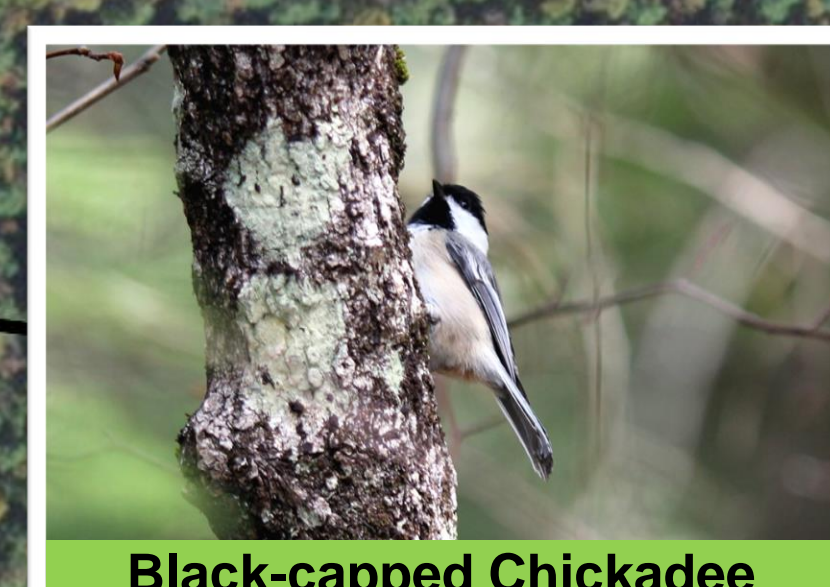
Stream Cruiser



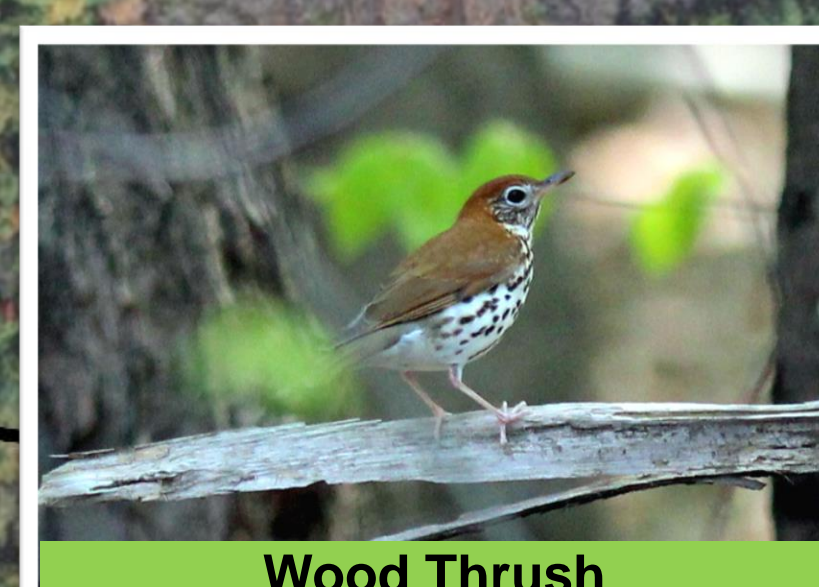
Ribbon Snake



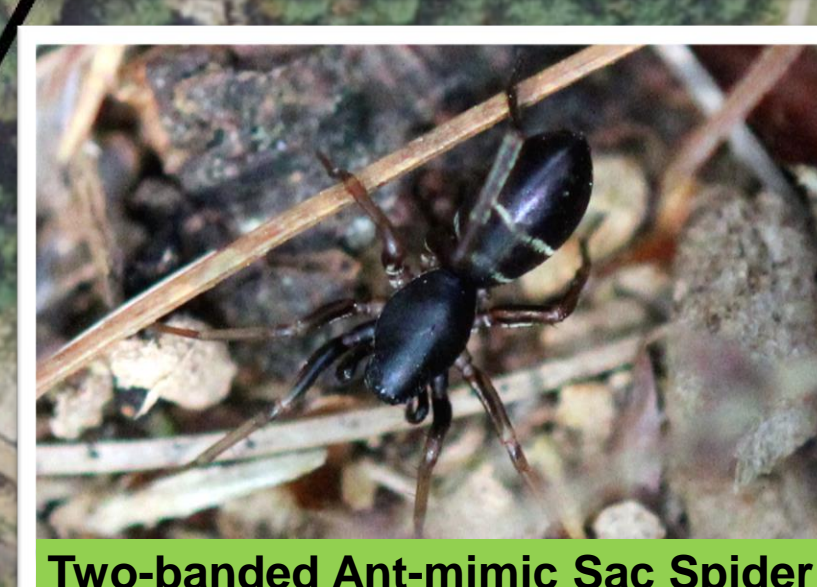
Eastern Forktail



Black-capped Chickadee



Wood Thrush



Two-banded Ant-mimic Sac Spider

Map produced by Steven Lamonde, M.S.  
 Data Sources: NAIP Imagery (2021)  
 11 September 2023  
 Moosewood Ecological, LLC  
 PO Box 9, Chesterfield, NH 03443  
 (603) 831-1980  
 www.moosewoodecological.com

